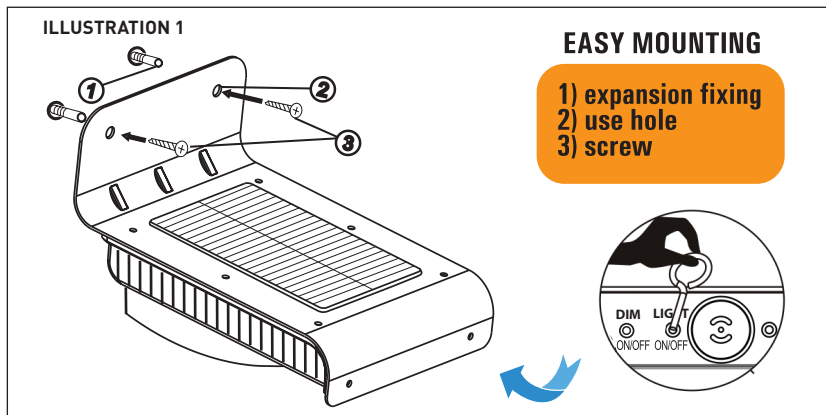


# User's Manual



## DECLARATION OF CONFORMITY

Hereby,

Company:	TE-GROUP nv
Address:	Kapelsestraat 61, 2950 Kapellen - BELGIUM

declare, that the following equipment:

Product Name:	Quintezz Outdoor Eco-Motion light +
Product Type:	LED SOLAR LIGHT

Is in compliance with the essential requirements and other relevant provisions of the EMC Directive.

This product has been tested against the following standards and specifications, applying versions valid on April 19, 2010:

EN 61000-6-3: 2007 (EN55022: 2006+A1: 2007)  
EN 61000-6-1: 2007 (IEC61000-4-2:2001, IEC61000-4-3:2006)

Joseph Van Oosterum, CEO TE-Group NV, december 2011

-----Manual/Outdoor Eco-Motion Light+/05-12/V01-----

### NOTE THE FOLLOWING TROUBLESHOOTING SOLUTIONS

**Problem 1:** Light does not activate when there is motion in the monitored area.

**Possible Solutions:**

Make sure that:

- The switch is in the "ON" position.
- The motion detector is clean (if not, please clean it.)
- The solar cell is aimed so that it can receive as much direct sunlight as possible during the day.
- The battery's charge is not sufficient enough (charge for 1 – 2 bright sunny days with the switch set to OFF).

**Problem 2:** Light flashes.

**Possible Solution:**

- **Weak battery.** Charge the solar light for 1-2 bright sunny days or 3 days normal bright daylight during which the switch must be switched OFF.

### DISPOSAL



Dispose of electronic devices in an eco-friendly fashion! Electronic devices do not belong in your household waste. Compliant with European Guideline 2002/96/EG for electric and electronic devices, used electronic devices must be collected separately and taken in for environmentally sound re-cycling. Options for disposing of used devices may be obtained from your township, city or municipal government.

**Incorrect disposal of batteries rechargeable batteries can harm the environment!**

They can contain poisonous heavy metals and are subject to treatment as hazardous wastes. Take your used batteries to a municipal collection site.

### GUARANTEE

Quintezz is a registered trademark of TE-Group NV. The Quintezz brand stands for superior product quality and outstanding customer service. That is why Quintezz warrants this product against all defects in material and workmanship for a period of **two (2) years** from the date of original purchase of the product. The conditions of this guarantee and the extent of responsibility of Quintezz under this guarantee can be downloaded from our website: [www.quintezz.com](http://www.quintezz.com).

## GB OUTDOOR ECO MOTION LIGHT +

### SOLAR MODULE:

The Quintezz Eco Motion solar module acts as the main power source, converting sunlight into electricity and charging the internal battery. Please keep in mind when mounting the Eco Motion lamp the solar cells require as much DIRECT SUNLIGHT (at least 4-8 hours) as possible. The longer the solar cells are exposed to direct sunlight, the longer the lamp will stay ON during night.

### MOUNTING LOCATION:

When located in a place that receives less sunlight the lamp will operate for fewer hours per night than expected. Nightly run times may also vary depending on how clear the sky is on any given day. Insufficient battery charging will affect performance and will result in the fact that **the lamp may turn off earlier than dawn because the battery was not fully charged.**

To the greatest extent possible, the solar module should be aimed to the southern sky in order to maximize exposure to direct sunlight. Keep in mind that during the 4 different seasons the lamp's burning time is affected due to this time of the year and the sun's angle in these 4 periods.

### INSTALLATION (SEE ILLUSTRATION I):

Use the 2 screws and expansion fixing included in the packaging to mount the lamp. Make sure to mount it on a stable, solid supporting surface, faced towards the sun as much as possible. Installation height is 1.8-2.5 meters. This lamp is made for outside use only.

The Eco Motion lamp is standard switched OFF. In OFF position, the solar cells will charge the battery without activating the lamp.

Please do leave the switch in this position for at least 2 or 3 sunny days. This will make sure the battery is fully charged **before switched ON** for later normal use.

Dim function is standard switched OFF. When switched ON, lamp will flash 2x. When switched OFF, lamp will flash 1X.

### CLEANING:

Keep the motion sensor free of dust and deposits by occasionally cleaning it with a dry cloth or wiping it off with warm, soapy water. Also, make sure the solar module is always free of dirt and deposits. Dirty solar cell cannot completely charge the battery.

This can cause premature aging in the battery and could lead to unreliable functioning of the device.