

Magic LED Quintezz® CUBE

Magic LED cube



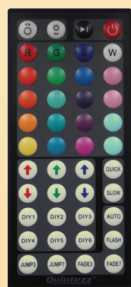
FEATURES

- 16x EPISTAR RGB LED (5mm) 5050 3-chip
- View angle: 360° degrees
- Can be used inside and outside, as home decoration, in the bedroom, next (or in) the swimming pool, pond, ...
- LED consumption: 0.18 Watt (2,8 W total consumption)
- Wireless use by Li-Ion 1800 MaH Battery
=> Up to 15 hours use
- Wireless induction charging (DC 7,5 V)
=> Charging time: +/- 6 hours
- Durability: >50,000 hours
- Up to 1 million colors possible
- Light angle: 120 degrees
- Material: White PE (polyethylene)
- IP gradation: IP68 fully waterproof
- Max weight: 100 kg
- Instant start
- Operating temperature: -10 ~ +40 degrees
- Voltage: 7.5V
- Color temperature: between 1000 ~ 6000K (Kelvin)
- Lumen: 7,5 lumen/LED in RGB mode
- Dimensions : 300x300x300mm

Lumen by color:
 BLUE: 20 Lumen
 RED: 35 Lumen
 YELLOW: 35 Lumen
 GREEN: 70 Lumen
 COLD WHITE: 120 Lumen



RGB IR REMOTE CONTROL



- ON/OFF
- 20x fixed color setting
- 6x light effects
- DIM function
- Faster/Slower function
- 6 programmable DIY buttons
- 6 "mix" buttons (up to 1 million colors)
- Memory function for last setting
- Infrared
- Battery CR2025

INDUCTION CHARGER

- Watt: max. 8W
- Output voltage: DC 7,5± 0.6V
- Output capacity: 1A (Vo=7,5±1.0V)
- Input voltage: AC 100~240V 50/60Hz
- Input protection: 2A thermal fuse
- Total wire length: 120 cm
- Charging time: +/- 6 hours



ADDITIONAL INFORMATION

EAN: 54.14633.06089.1

Certifications:



**Change the colour of your LED cube
with just a flick on the remote control
and jazz up the atmosphere or mood.**

Copyright © Quintezz. All rights reserved. Specifications are subject to change without prior notice. Quintezz is a registered trademark of TE-Group NV. Other brands and product names are trademarks or tradenames of their respective owners.